

**ADVISORY COMMITTEE ON ANIMAL FEEDINGSTUFFS**

**73<sup>rd</sup> Meeting of ACAF on 14 June 2017**

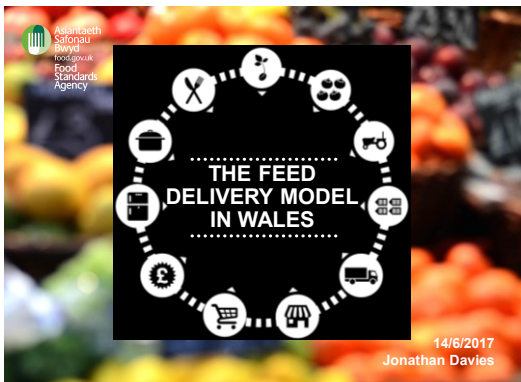
**PRESENTATION**

**FEED DELIVERY MODEL IN WALES**

**Jonathan Davies**

**FSA Wales**

**May 2017**




---

---

---

---

---

---

---

---




---

---

---

---

---

---

---

---

.....

**Contents**

- Official Feed Controls in the UK
- Feed Establishments in Wales
- The Feed Delivery Model in Wales
- Links to Corporate Objectives and Plans
- Performance and Key Achievements
- Future Work

---

---

---

---

---

---

---

---



4

---

---

---

---

---

---

---

---

.....

### Animal feed

The UK has about 200,000 animal feed businesses involved in importing, producing, handling, storing and distributing animal feed. This industry is worth about £4.4bn to the economy.

FSA's main aims in this area are:

- To protect consumer and animal health; and
- Ensure that those buying the feed are provided with sufficient information to allow them to make informed choices.

© 2015 Food Standards Agency

5




---

---

---

---

---

---

---

---

.....

### FSA Aims

- To maintain and improve food and animal feed safety and standards
- To protect the health of the population
- To protect consumer and animal health
- To ensure that those buying the feed are provided with sufficient information to allow them to make informed choices

© 2015 Food Standards Agency

6




---

---

---

---

---

---

---

---








---

---

---

---

---

---

---

---

.....

**The Feed Delivery Model in Wales**

- Local authorities have a statutory duty to undertake official controls and enforce feed law
- This includes:
- Ensuring feed establishments meet hygiene requirements and the monitoring of composition, labelling, claims and descriptions relating to feedingstuffs for food producing animals and pets.




---

---

---

---

---

---

---

---

.....

**The Feed Delivery Model In Wales**

- Shortcomings identified in delivery of animal feed official controls in Wales
- FSA, local authorities and Welsh Government worked together to address issues




---

---

---

---

---

---

---

---

**The Feed Delivery Model In Wales**

- Welsh Ministers agreed that the sum of £490,000 should be removed from the revenue support grant on a recurrent basis from 1 April 2015
- This funding is available to the FSA to direct and support local authorities to deliver a risk based animal feed interventions programme in Wales




---

---

---

---

---

---

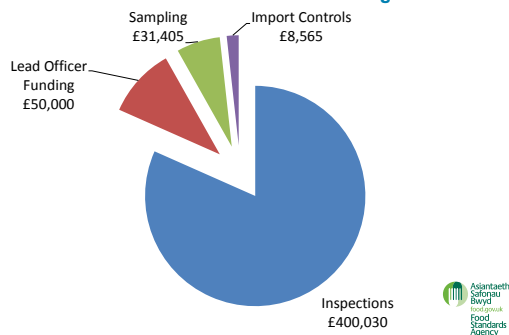
---

---

---

---

**Breakdown of Wales Animal Feed Funding 2016/17**




---

---

---

---

---

---

---

---

---

---

**Animal Feed Governance Group**

- Ensure that the programme is on track to deliver the required benefits, that the financial performance is on target and any required changes are identified and addressed to ensure the delivery of activities
- Consider future developments, the understanding and sharing of good practice and addressing feedback on progress made and improvement opportunities




---

---

---

---

---

---

---

---

---

---

Regional Delivery

- Six regions each with a Regional Lead Feed Officer
- Shared Regulatory Services
- Cwm Taf
- Gwent
- Mid and West Wales
- Neath Port Talbot & Swansea
- North Wales




---

---

---

---

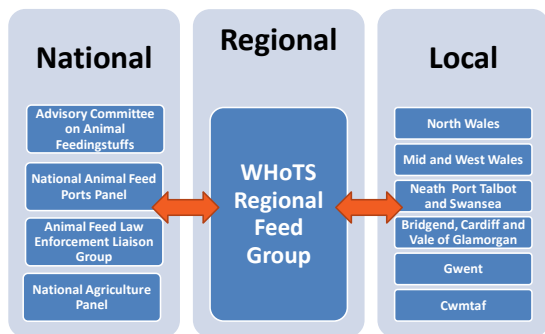
---

---

---

---

National, Regional and Local Structure




---

---

---

---

---

---

---

---

Animal Feed Governance Group

- Agree the process to facilitate the day to day operational working necessary to deliver the agreed programme of work
- This will ensure efficient management of all the work involved, provide assurance that the key objectives are being met and that the regions are proceeding in accordance with their work plan




---

---

---

---

---

---

---

---



.....  
**WHoTS Regional Feed Group**

- Similar to NAP but at a Regional Level
- Enables feedback from NAP
- The purpose of the WHoTS Regional Feed Group is to provide technical and operational support to local authorities in Wales by helping coordinate enforcement, promote good practice and provide specialist expert advice
- Made up of Lead Feed Officer in each Region




---

---

---

---

---

---

---

---

---

---

.....  
**Role of the Regional Lead Feed Officer**

- Act as a point of liaison
- Highlight strategic or operational issues that require discussion and action
- Share best practice and promote consistency
- Input into discussions with FSA officials on emerging issues and operational issues
- Input into consultation responses
- Escalate unresolved queries from their area
- Provide legal interpretation on existing legislation
- Assist with the preparation of guidance / leaflets




---

---

---

---

---

---

---

---

---

---

.....  
**Role of the Regional Lead Feed Officer**

- Identify and discuss future priorities and issues
- Attend meetings to represent regions views
- Provide advice and on-site training and mentoring as required to increase capacity and maintain competence in the regions
- Coordinate feed sampling
- Contribute to a model service plan for adoption/adaptation by the regions
- Produce and maintain common standards, operating procedures and documentation to support delivery of the service in accordance with the FSA's Code of Practice




---

---

---

---

---

---

---

---

---

---

.....  
**WHoTS Regional Feed Group**

- Other representatives include:
- Food Standards Agency
- Agricultural Analysts
- VMD
- RIW
- APHA




---

---

---

---

---

---

---

---

---

---

.....  
**Regional Delivery**

- Work programme developed for each region
- Programme agreed and MoU signed between region and FSA
- Quarterly returns provided to FSA by Regional Lead Officers
- Payment made after completion of work
- Meetings held with Regional Lead Officers




---

---

---

---

---

---

---

---

---

---

.....  
**Feed Service Aims and Objectives**

To ensure that animal feedingstuffs produced, sold, stored or supplied and used within Wales are:

- Safe and wholesome, produced under hygienic conditions
- Of a satisfactory quality and composition
- Not adulterated
- Suitably labelled and advertised




---

---

---

---

---

---

---

---

---

---

.....  
**Feed Service Aims and Objectives**

- To investigate cases of contaminated animal feedingstuffs and where possible to identify the source of contamination and prevent further spread.




---

---

---

---

---

---

---

---

---

---

.....  
**Delivering Aims and Objectives**

- Registering and approving animal feed establishments
- Carrying out a range of programmed activities including the inspection, sampling and monitoring of establishments and products,
- Taking follow-up action as necessary in accordance with published enforcement policies, to ensure that identified breaches of legislation are rectified.
- Investigating complaints concerning feedingstuffs.
- Taking enforcement action




---

---

---

---

---

---

---

---

---

---

.....  
**Delivering Aims and Objectives**

- Liaising with relevant bodies over issues of enforcement and consistency
- Ensuring that staff are appropriately qualified, possess suitable technical and professional skills, and are competent to perform the duties expected
- Monitoring the implementation of procedures




---

---

---

---

---

---

---

---

---

---

.....  
**Internal Monitoring**

- Quantitative and qualitative internal monitoring of the feed delivery programme is the responsibility of the Regional Lead Feed Officers
- Quarterly reports are provided to the FSA in Wales
- A procedure has been developed to provide a framework for these activities which aims to ensure records of internal monitoring activities are made and retained




---

---

---

---

---

---

---

---

.....  
**Training**

- FSA funded in collaboration with WHO/TS
- Training in Wales for 2016/17 included:-
  - Discussions and workshops in each feed region
  - Practical Animal Nutrition
  - Contaminants in Animal Feed




---

---

---

---

---

---

---

---




---

---

---

---

---

---

---

---

.....  
**Link to Corporate Objectives and Plans**

- Linked to the FSA Strategic Plan 2015-20 titled Food We Can Trust
- Implementation of the new feed delivery model in Wales has been identified as a priority
- Working in collaboration to deliver a new feed delivery model for Wales is a key feature of the Welsh annex of the strategy




---

---

---

---

---

---

---

---

.....  
**Food for Wales, Food from Wales 2010-2020**

- Food and Farming Sector is considered key to the Welsh economy
- Food and drink supply chain makes up approximately 18% of the total Welsh workforce, and generated over £6 billion in 2010
- A clear direction for the Welsh food industry to grow in a sustainable and profitable manner
- Animal Feed Controls key part of the food chain




---

---

---

---

---

---

---

---

.....  
**Towards Sustainable Growth: An Action Plan for the Food and Drink Industry 2014-2020**

- Welsh Government strategic action plan on food and drink
- Ambition to grow sales in the food and drink sector by 30% to £7 billion by the year 2020.
- The food chain needs to be able to deliver high quality, safe and sustainable food to maintain consumer trust
- Food safety is a whole food chain responsibility
- Farmers must take every precaution to ensure that the crops and livestock they produce for market are safe
- EU exit - trade




---

---

---

---

---

---

---

---




---

---

---

---

---

---

---

---

.....

**Key Achievements**

- 102% of inspection programme completed in year 1
- 97% of inspection programme completed in year 2;
- Feed activity carried out in all local authority areas;
- Over 1,200 additional inspections conducted in mid and west Wales compared with previous years;
- Improved accuracy of feed establishment databases;
- Development of an All Wales Service Plan;




---

---

---

---

---

---

---

---

.....

**Key Achievements**

- Development and agreement of a Memorandum of Understanding between FSA and feed regions
- A coordinated animal feed sampling plan with 133 out of a target of 133 feed samples taken
- Provision of training to feed officers
- Import controls carried out at ports in Wales
- Implementation of earned recognition




---

---

---

---

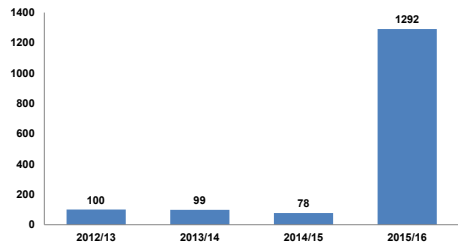
---

---

---

---

Funding Impact On Inspection Numbers



Number of Feed Inspections in Mid and West Wales Between 2012-2016



---

---

---

---

---

---

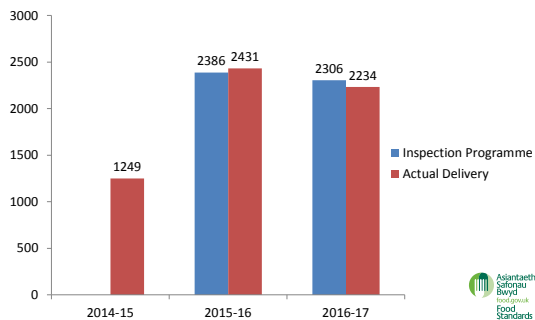
---

---

---

---

Wales Animal Feed Inspection Figures



---

---

---

---

---

---

---

---

---

---



---

---

---

---

---

---

---

---

---

---

