

ADVISORY COMMITTEE ON ANIMAL FEEDINGSTUFFS

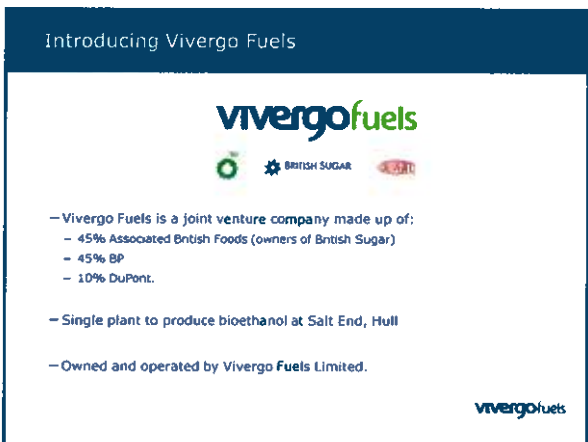
50th Meeting of ACAF on 3 June 2010

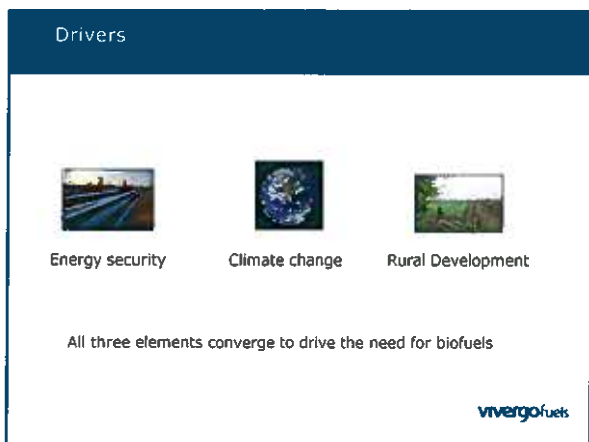
Presentation on Biofuels

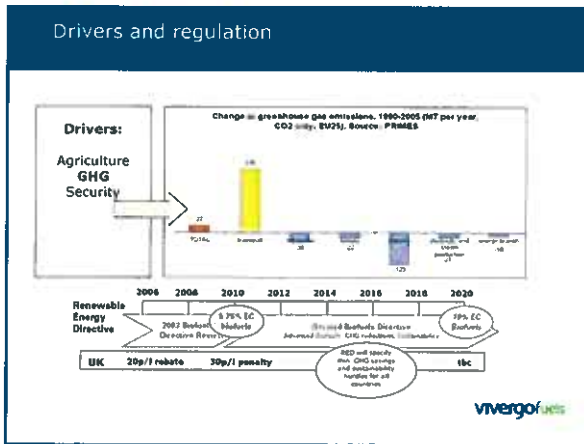
Presentation from David Maxwell

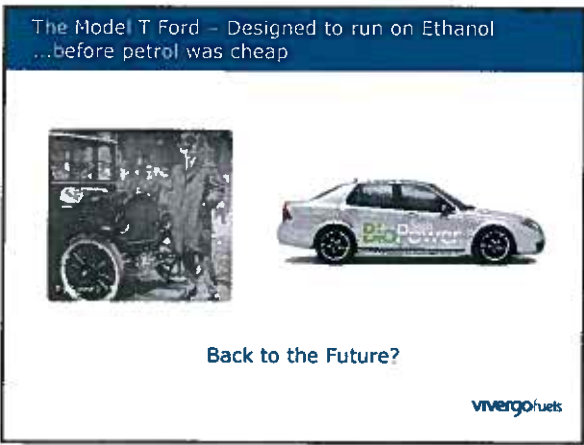
**ACAF Secretariat
May 2010**

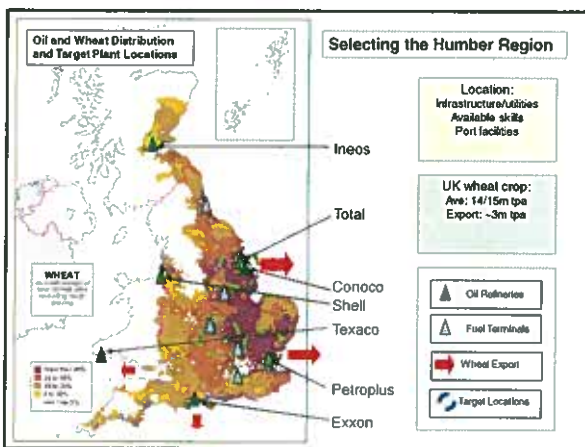


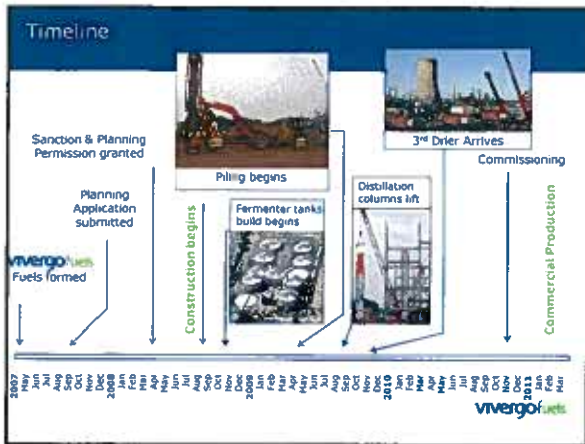


















The Vivergo Fuels Wheat to Bioethanol Plant Saltend, Hull

- World Scale Ethanol Plant:**
 - 420m tonne/yr bioethanol
 - 440k te/yr DDGS
- From:**
 - 1.125m te/yr wheat
 - 70 full time personnel
 - Latest technology asset



- Well Defined Project:**
 - "Best in Class" external audit rating
- Top Quartile Business:**
 - Good Carbon and Sustainability performance
 - Low cost wheat
 - CHP, Jetty and Port access
 - Technology platform
 - Supply chain synergy from shareholders

vivergo fuels

A Unique Value Chain



ABF (100% B1) ABF/BP/Du Pont BP ABF (AS 400) BP/Du Pont

Underpinned by a unique partnership to leverage supply chain strengths



vivergo fuels

Vision Statement

We deliver sustainable **energy** and high performance through distinctive partnerships

vivergo fuels
